

# VIDOS Logging

An export tutorial

1. Configure Logging
2. Export Log
3. Copy and Paste Logs

# Configure Logging

- Log Into VIDOS as an Administrator

# Configure Logging

- Open VIDOS and log in as an Administrator
- Click on System
- Click on Configuration



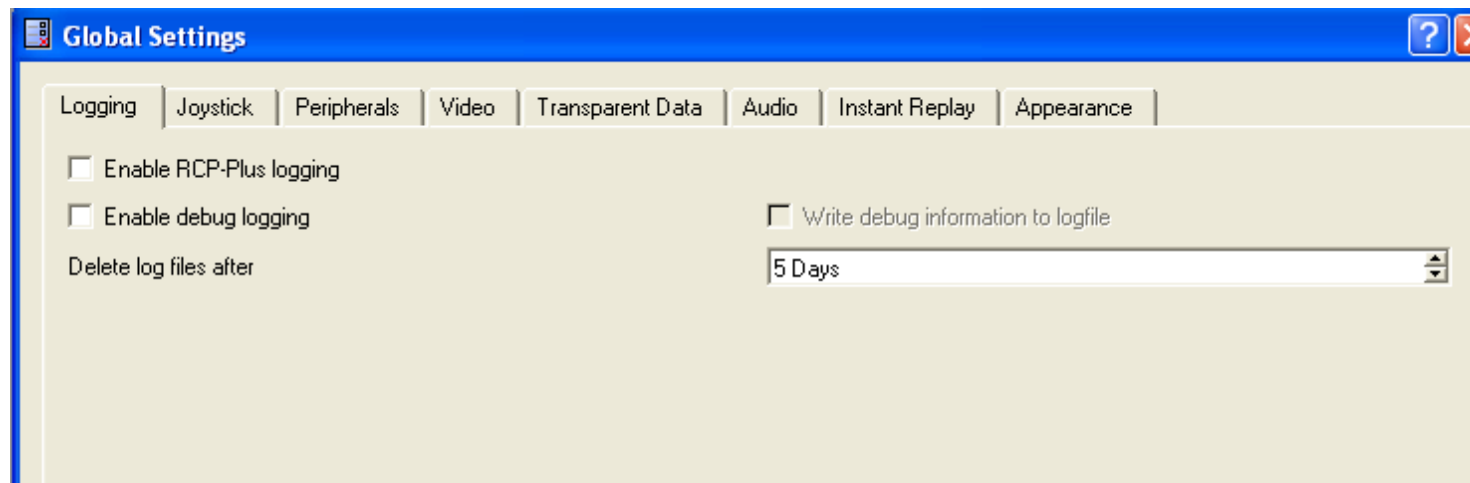
# Global Settings

- Click on Global Settings



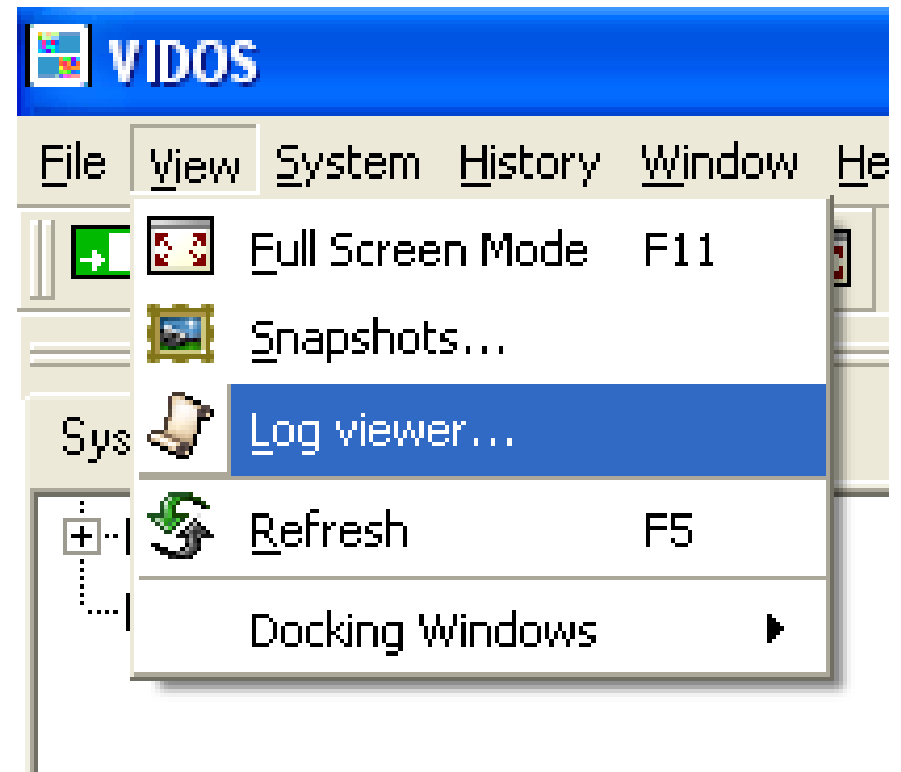
# Verify Global Settings

- Verify that Enable RCP-Plus and Enable debug logging are unchecked. You would check those only if told to do so. The default log file retention time is 5 days. You would change that only if told to do so.



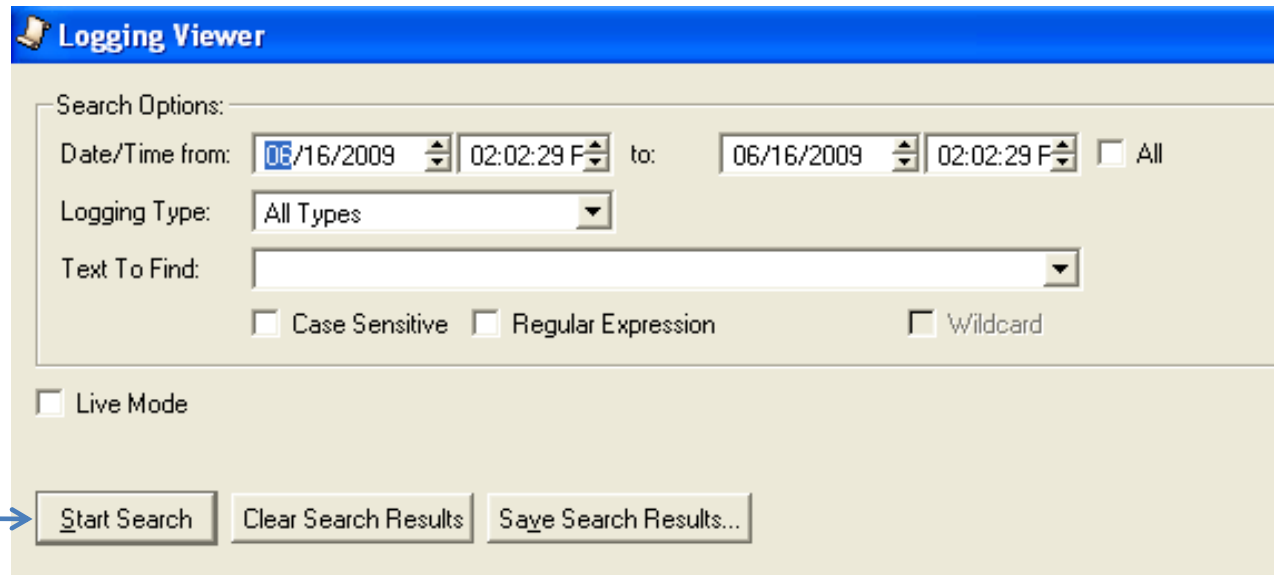
# Accessing Log Viewer

- Click on View
- Click on Log viewer



# Search Parameters

- Decide on the Date/Time to begin and end the search. Do not check the all box. You will get all events since the system was installed. Leave the Logging Type set to All Types. This will give you the most information.



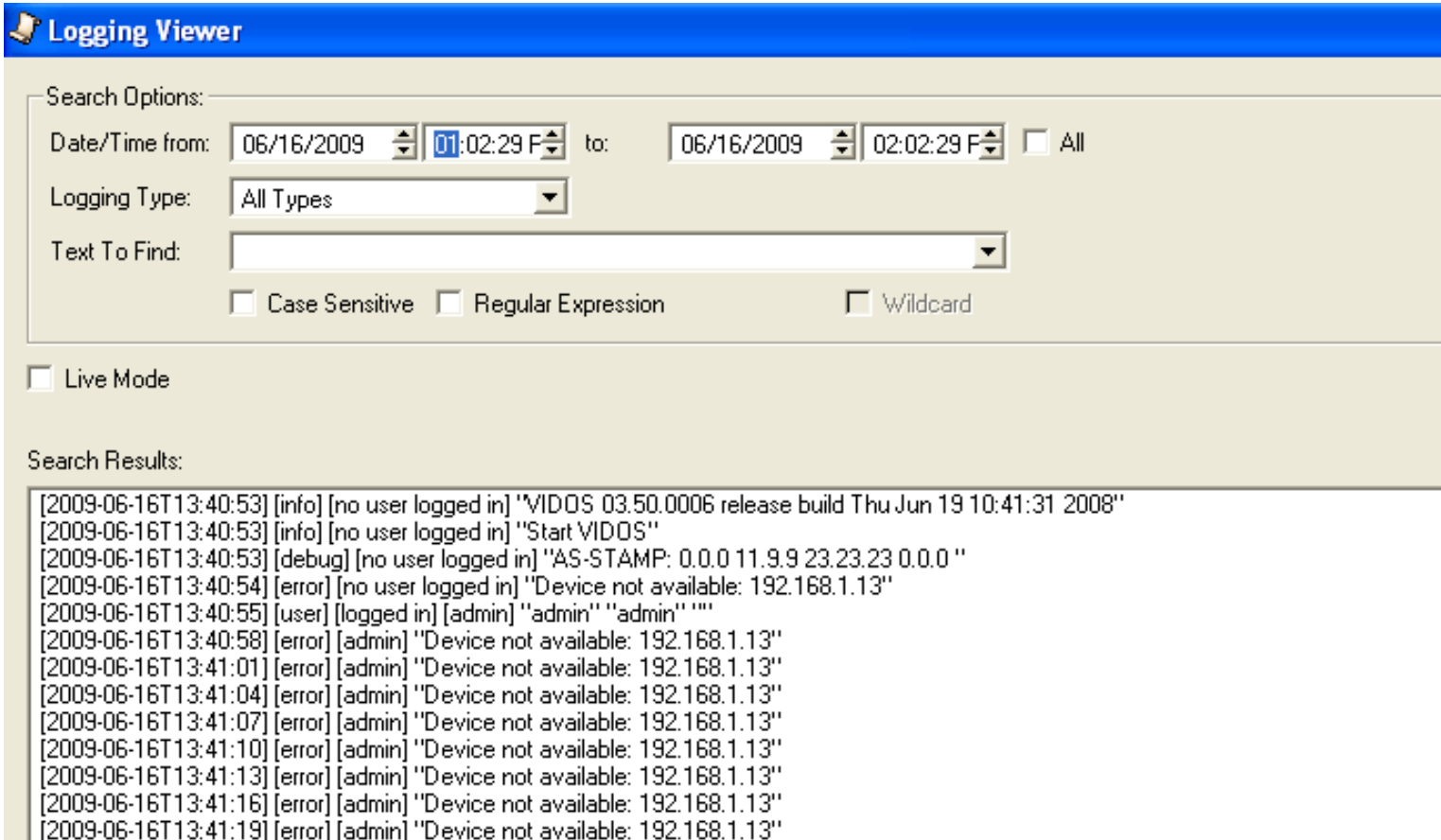
The screenshot shows the 'Logging Viewer' window with the following search options:

- Search Options:**
  - Date/Time from: 06/16/2009 02:02:29 F to: 06/16/2009 02:02:29 F  All
  - Logging Type: All Types
  - Text To Find: (empty text box)
  - Case Sensitive  Regular Expression  Wildcard
- Live Mode
- Buttons: Start Search, Clear Search Results, Save Search Results...

Make sure you click on Start Search

# Search Results

- Your search results should look something like the results below



The screenshot shows the 'Logging Viewer' application window. The title bar is blue with a yellow bell icon and the text 'Logging Viewer'. Below the title bar is a search options section with a light beige background. It contains several input fields and checkboxes. The 'Date/Time from' field is set to '06/16/2009' and '01:02:29 F', with a 'to' field set to '06/16/2009' and '02:02:29 F'. There is an 'All' checkbox. The 'Logging Type' dropdown is set to 'All Types'. The 'Text To Find' dropdown is empty. There are checkboxes for 'Case Sensitive', 'Regular Expression', and 'Wildcard', all of which are unchecked. Below the search options is a 'Live Mode' checkbox, which is also unchecked. The 'Search Results' section is at the bottom, displaying a list of log entries in a monospaced font. The entries include timestamps, log levels, and messages such as 'VIDOS 03.50.0006 release build Thu Jun 19 10:41:31 2008', 'Start VIDOS', 'AS-STAMP: 0.0.0 11.9.9 23.23.23 0.0.0', and multiple 'Device not available: 192.168.1.13' error messages.

**Logging Viewer**

Search Options:

Date/Time from: 06/16/2009 01:02:29 F to: 06/16/2009 02:02:29 F  All

Logging Type: All Types

Text To Find:

Case Sensitive  Regular Expression  Wildcard

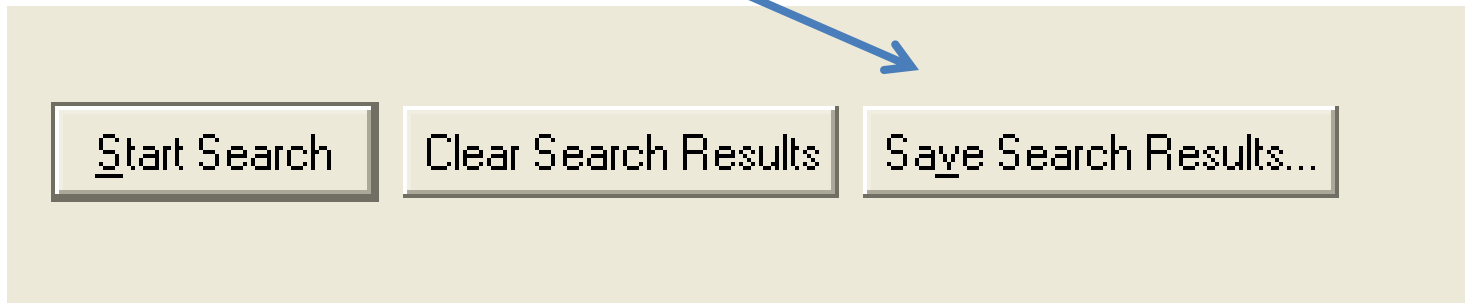
Live Mode

Search Results:

```
[2009-06-16T13:40:53] [info] [no user logged in] "VIDOS 03.50.0006 release build Thu Jun 19 10:41:31 2008"  
[2009-06-16T13:40:53] [info] [no user logged in] "Start VIDOS"  
[2009-06-16T13:40:53] [debug] [no user logged in] "AS-STAMP: 0.0.0 11.9.9 23.23.23 0.0.0 "  
[2009-06-16T13:40:54] [error] [no user logged in] "Device not available: 192.168.1.13"  
[2009-06-16T13:40:55] [user] [logged in] [admin] "admin" "admin" ""  
[2009-06-16T13:40:58] [error] [admin] "Device not available: 192.168.1.13"  
[2009-06-16T13:41:01] [error] [admin] "Device not available: 192.168.1.13"  
[2009-06-16T13:41:04] [error] [admin] "Device not available: 192.168.1.13"  
[2009-06-16T13:41:07] [error] [admin] "Device not available: 192.168.1.13"  
[2009-06-16T13:41:10] [error] [admin] "Device not available: 192.168.1.13"  
[2009-06-16T13:41:13] [error] [admin] "Device not available: 192.168.1.13"  
[2009-06-16T13:41:16] [error] [admin] "Device not available: 192.168.1.13"  
[2009-06-16T13:41:19] [error] [admin] "Device not available: 192.168.1.13"
```

# Exporting Logs

- Once you have your search desired results at the bottom of the window is a Save Search Results button. Click on it.



# Saving Logs

- When you click on the Save Search Results button you can select where you save the log files. Save it to a location and file name you can remember and can save and retrieve the files from (a CD drive is a poor choice).

