

# VRM Logging

An export tutorial

# Accessing VRM

## Slide 1

- Open Internet Explorer and type in the IP address of the VRM server you are pulling the log from. This will take you to the VRM Monitor web page.
- This can be on any computer as long as it's on the same network as the VRM server(s).

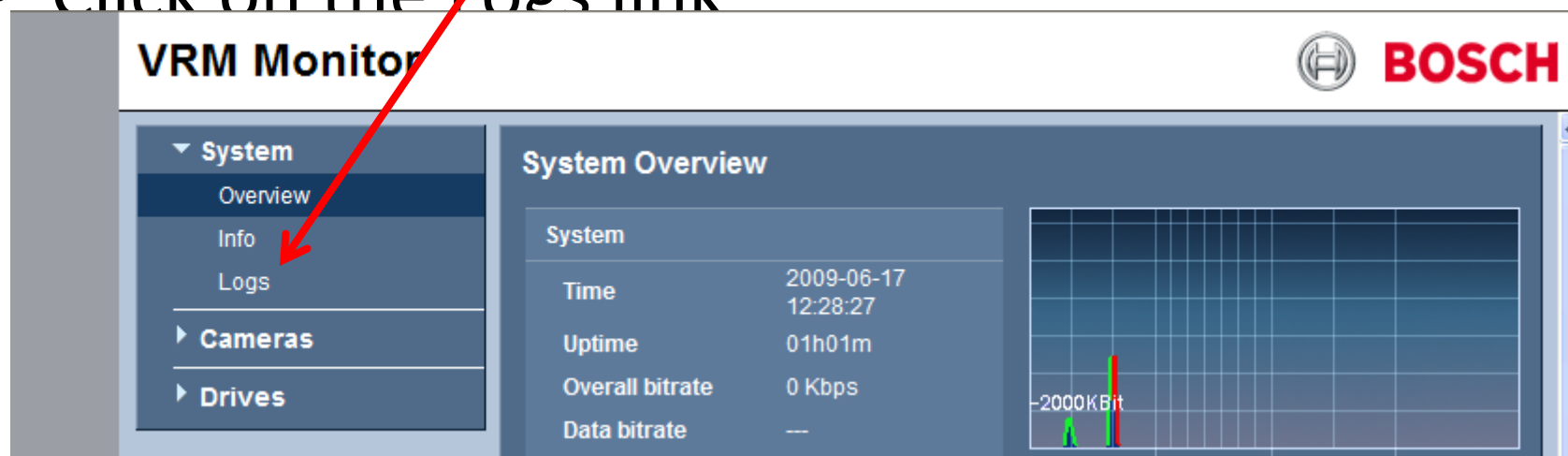
# Accessing VRM

## Slide 2

- Open Internet Explorer and type in the IP address of the VRM server you are pulling the log from. This will take you to the VRM Monitor web page.
- The default password is srvadmin and there is no password

# Accessing VRM

- This is the default VRM Monitor page. You can do other system monitoring tasks from here, but we will concentrate on exporting the logs.
- Click on the Logs link



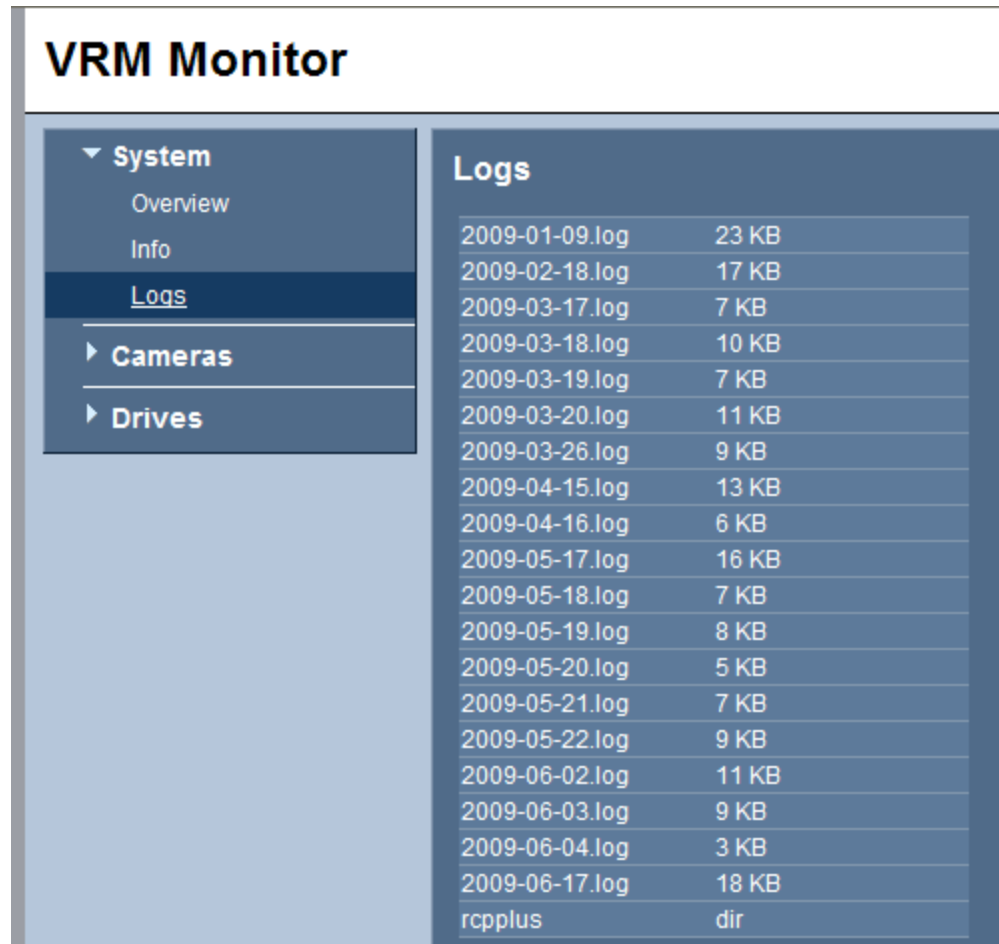
The screenshot displays the VRM Monitor interface. The title bar shows "VRM Monitor" on the left and the Bosch logo on the right. A left-hand navigation menu is visible, with the "System" section expanded to show "Overview", "Info", and "Logs". A red arrow points to the "Logs" link. The main content area is titled "System Overview" and contains a table with the following data:

System	
Time	2009-06-17 12:28:27
Uptime	01h01m
Overall bitrate	0 Kbps
Data bitrate	---

To the right of the table is a graph showing data trends, with a vertical axis labeled "-2000KBit".

# VRM Log Page

- This is what the log page looks like.
- The oldest log is second from the bottom.
- Normally the rcppplus logging is not used.
- You will have to click on the log title to get to the log. You cannot right click and download



The screenshot shows the VRM Monitor interface. On the left is a navigation menu with the following items: System (expanded), Overview, Info, Logs (selected), Cameras, and Drives. On the right is a table of logs.

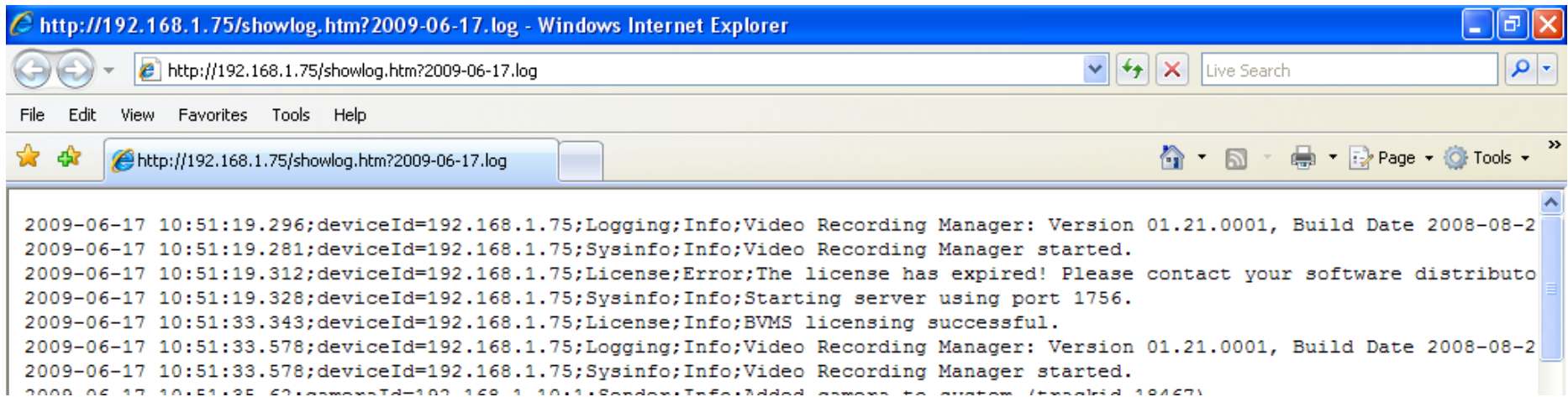
VRM Monitor	
System	
Overview	
Info	
<u>Logs</u>	
Cameras	
Drives	

Logs	
2009-01-09.log	23 KB
2009-02-18.log	17 KB
2009-03-17.log	7 KB
2009-03-18.log	10 KB
2009-03-19.log	7 KB
2009-03-20.log	11 KB
2009-03-26.log	9 KB
2009-04-15.log	13 KB
2009-04-16.log	6 KB
2009-05-17.log	16 KB
2009-05-18.log	7 KB
2009-05-19.log	8 KB
2009-05-20.log	5 KB
2009-05-21.log	7 KB
2009-05-22.log	9 KB
2009-06-02.log	11 KB
2009-06-03.log	9 KB
2009-06-04.log	3 KB
2009-06-17.log	18 KB
rcppplus	dir

# VRM Log

- This is what an actual log page looks like. If you are going to just review the logs and not going to export the files this is where you would stop.

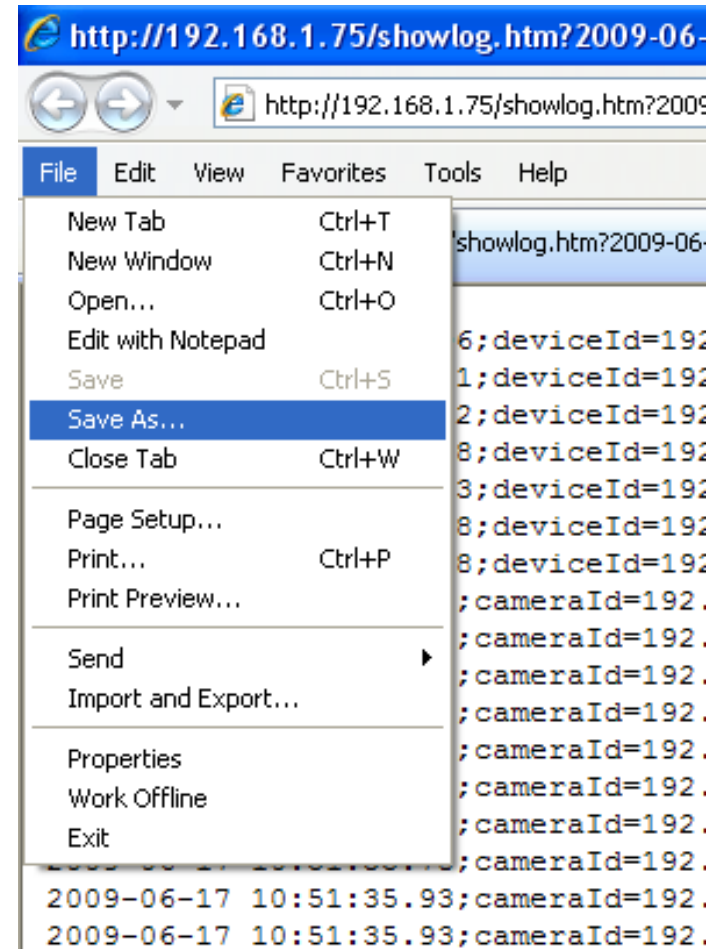


```
http://192.168.1.75/showlog.htm?2009-06-17.log - Windows Internet Explorer
http://192.168.1.75/showlog.htm?2009-06-17.log
File Edit View Favorites Tools Help
http://192.168.1.75/showlog.htm?2009-06-17.log
2009-06-17 10:51:19.296;deviceId=192.168.1.75;Logging;Info;Video Recording Manager: Version 01.21.0001, Build Date 2008-08-2
2009-06-17 10:51:19.281;deviceId=192.168.1.75;Sysinfo;Info;Video Recording Manager started.
2009-06-17 10:51:19.312;deviceId=192.168.1.75;License;Error;The license has expired! Please contact your software distributo
2009-06-17 10:51:19.328;deviceId=192.168.1.75;Sysinfo;Info;Starting server using port 1756.
2009-06-17 10:51:33.343;deviceId=192.168.1.75;License;Info;BVMS licensing successful.
2009-06-17 10:51:33.578;deviceId=192.168.1.75;Logging;Info;Video Recording Manager: Version 01.21.0001, Build Date 2008-08-2
2009-06-17 10:51:33.578;deviceId=192.168.1.75;Sysinfo;Info;Video Recording Manager started.
2009-06-17 10:51:35.60;deviceId=192.168.1.75;Sysinfo;Info;Added camera to system (serialid 18467)
```

# Exporting Logs

## Step 1

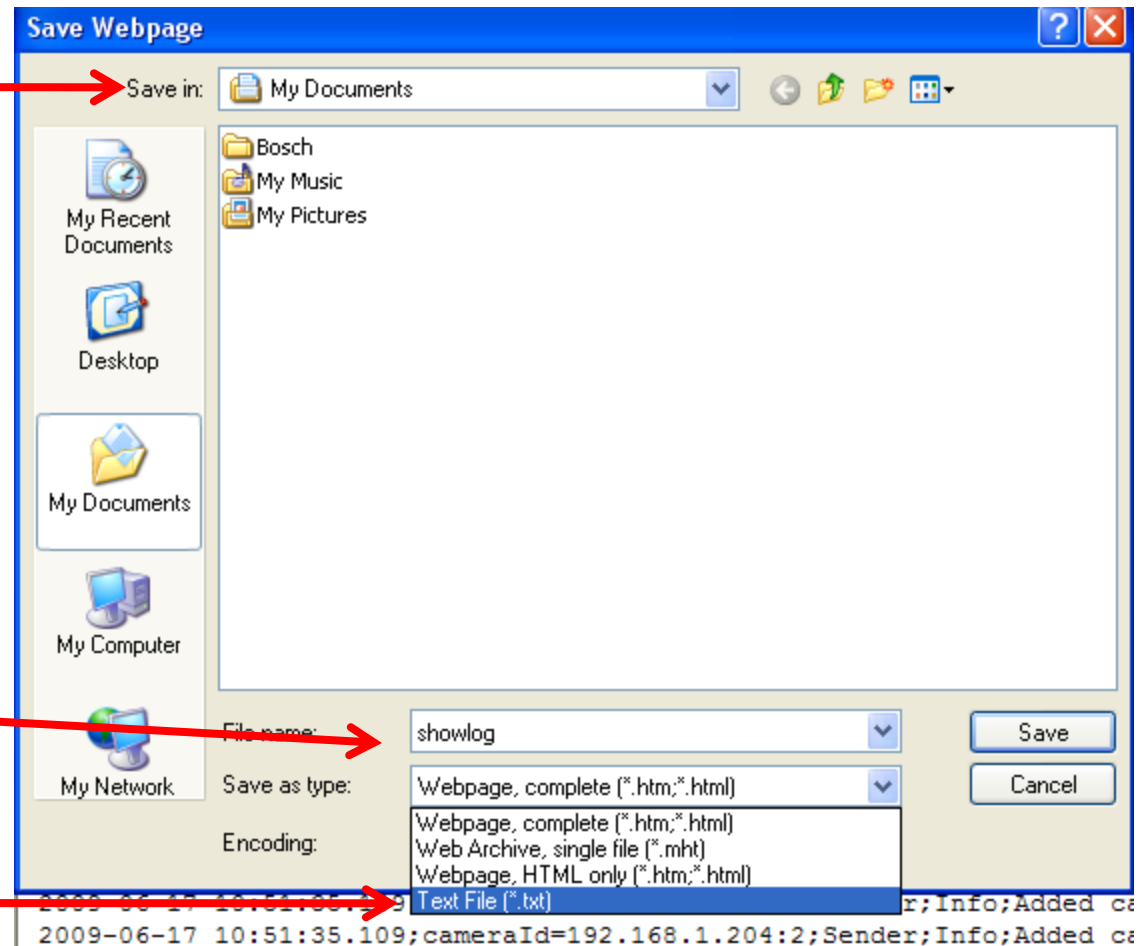
- You normally send the file as a .txt file since some email systems strip out .html files which is the native log file format.
- To do this you go to the File menu and click on Save As...



# Exporting Logs

## Step 2

- Select where you want to save the file. Normally a thumb drive.
- Make sure you give it a descriptive name. i.e. location name and date.
- Select the last type which is Text File



# Send the File off

- Once you are done exporting files. Remove the thumb drive from the computer and insert it a computer that you can email from and email the files to the technical POC.

# Windows Quick Location

- Using Windows:
  - Log into the VRM Server as Administrator
  - Go to Services (control panel, administrative tools, services), located BVMS VRM service and stop the service
  - Go to my computer, then C:/, then documents and settings, then all users, then application data, then bosch, then vms, then copy the log folder
  - Go back to Services as shown above and restart services